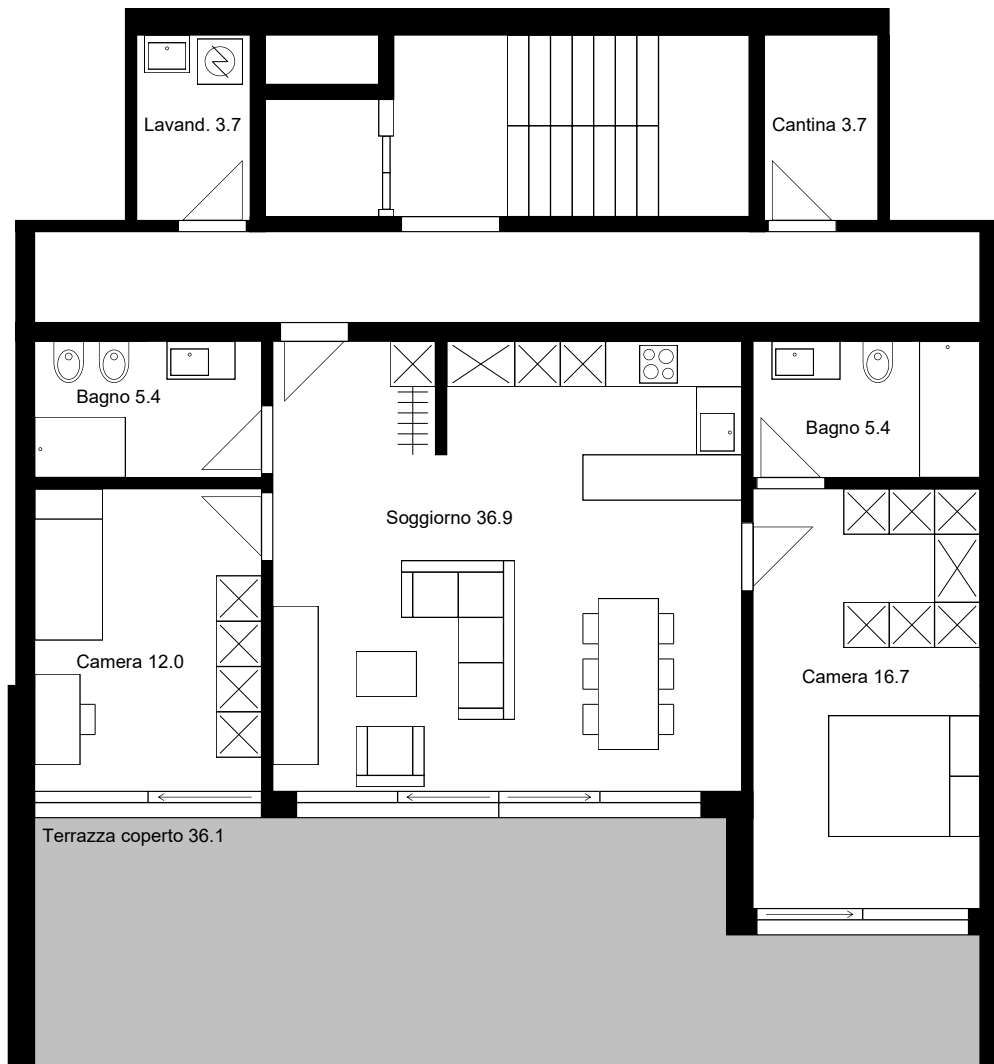


1°P (1:100)

05

App. 3.5



### 3.5 Camere

Terreno	ca. 185.0 m <sup>2</sup>
SUL	90.7 m <sup>2</sup>
Superficie netta	76.4 m <sup>2</sup>
Terrazza coperta	36.1 m <sup>2</sup>
Giardino	
Cantina/Lavanderia	7.4 m <sup>2</sup>

<b>Prezzo</b>	<b>940'000.—</b>
Posteggi (2 pz.)	150'000.—

### Superficie netta

Soggiorno	36.9 m <sup>2</sup>
Camera 1	16.7 m <sup>2</sup>
Camera 2	12.0 m <sup>2</sup>
Bagno 1	5.4 m <sup>2</sup>
Bagno 2	5.4 m <sup>2</sup>

### Budget (incl. IVA)

Cucina	CHF	35'000.—
Bagno	CHF	25'000.—
Piastrelle m <sup>2</sup>	CHF	130.—
Parquet m <sup>2</sup>	CHF	130.—
Guardaroba	CHF	3'500.—
Piante	CHF	0.—